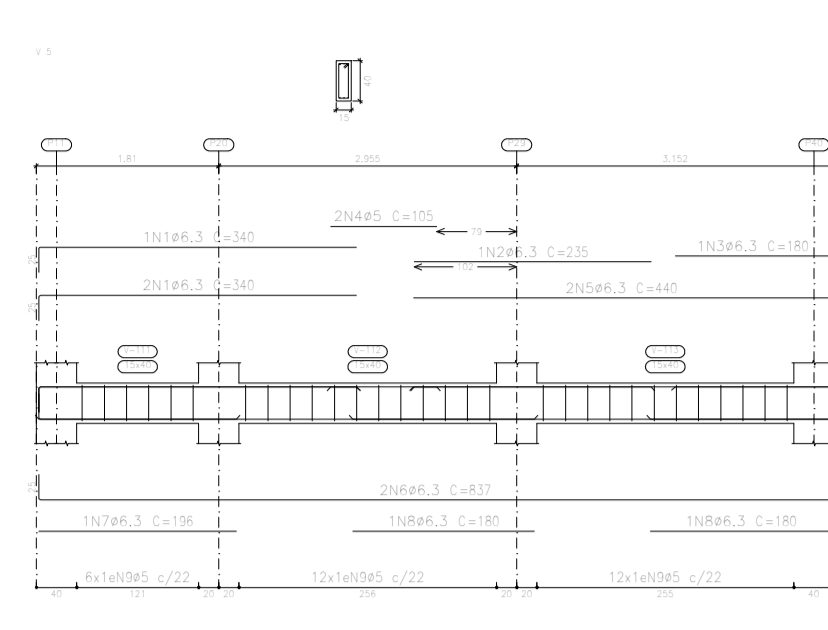
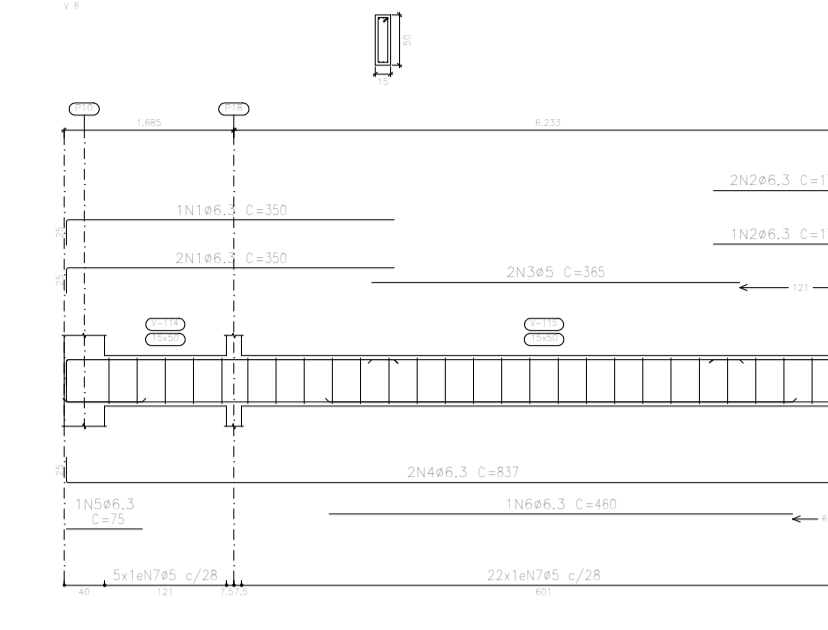


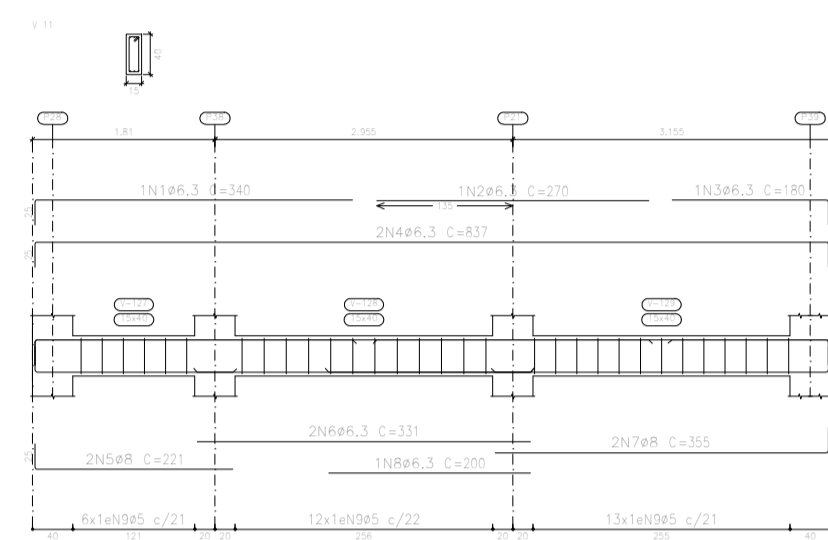
Elemento	Pos.	Diam.	Q.	Esquema (cm)	Comp. (cm)	Toto (cm)	CA-50 (kg)	CA-60 (kg)
V.4	1	Ø6.3	3	[Diagram]	300	1050	2.8	
	2	Ø6.3	3	[Diagram]	170	1010	1.2	
	3	Ø6.3	3	[Diagram]	300	1050	2.8	
	4	Ø6.3	3	[Diagram]	837	1010	4.1	
	5	Ø6.3	3	[Diagram]	400	1010	1.1	
	6	Ø6.3	3	[Diagram]	400	1010	1.1	
7	Ø5	23		[Diagram]	118	3184		5.0
					1000+1050	1010	6.7	
					Ø5	0.0	0.7	
					Ø6.3	10.1	0.0	
					Toto	10.1	6.7	



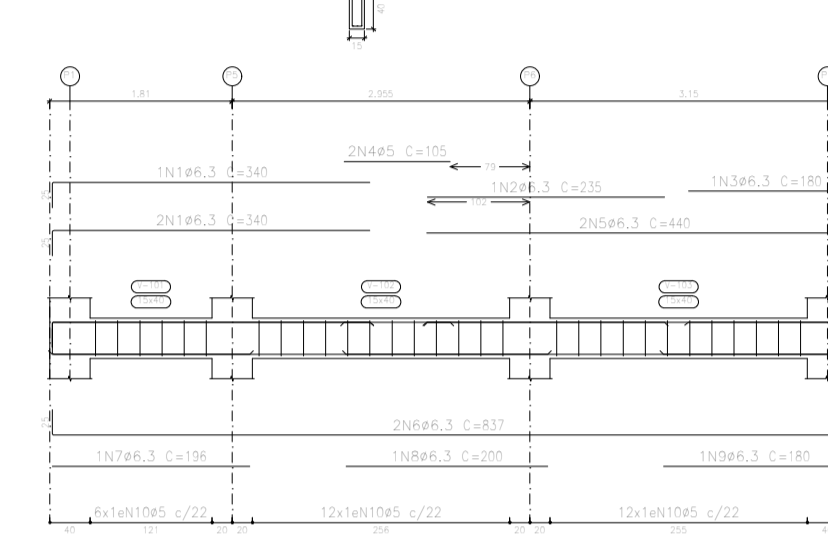
Elemento	Pos.	Diam.	Q.	Esquema (cm)	Comp. (cm)	Toto (cm)	CA-50 (kg)	CA-60 (kg)
V.5	1	Ø6.3	3	[Diagram]	340	1050	2.5	
	2	Ø6.3	3	[Diagram]	230	1010	0.9	
	3	Ø6.3	3	[Diagram]	180	1010	0.4	
	4	Ø6.3	3	[Diagram]	180	1010	0.4	
	5	Ø6.3	3	[Diagram]	440	1010	2.2	
	6	Ø6.3	3	[Diagram]	837	1010	4.1	
7	Ø6.3	3	[Diagram]	180	1010	0.4		
8	Ø6.3	3	[Diagram]	180	1010	0.4		
9	Ø5	30		[Diagram]	98	2940		4.8
					1000+1050	1010	6.7	
					Ø5	0.0	0.7	
					Ø6.3	12.1	0.0	
					Toto	12.1	6.7	



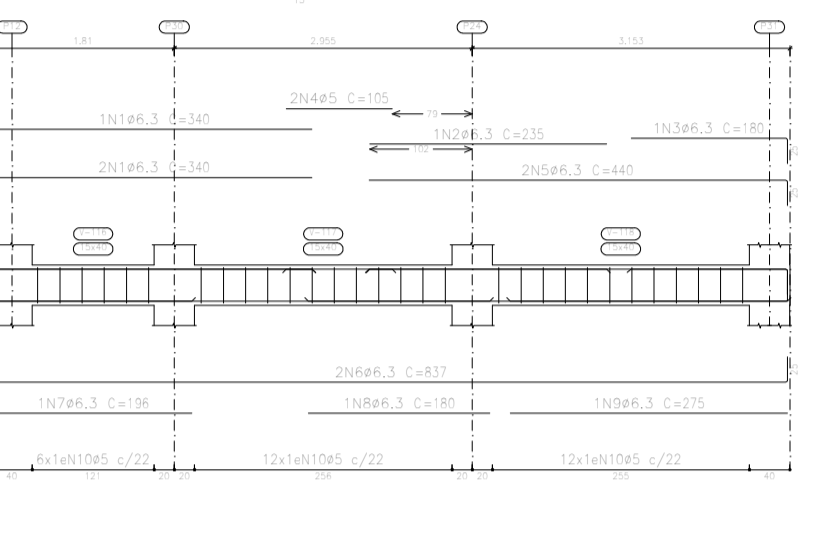
Elemento	Pos.	Diam.	Q.	Esquema (cm)	Comp. (cm)	Toto (cm)	CA-50 (kg)	CA-60 (kg)
V.6	1	Ø6.3	3	[Diagram]	170	1010	0.6	
	2	Ø6.3	3	[Diagram]	300	1050	2.8	
	3	Ø6.3	3	[Diagram]	300	1050	2.8	
	4	Ø6.3	3	[Diagram]	837	1010	4.1	
	5	Ø6.3	3	[Diagram]	70	1010	0.2	
	6	Ø6.3	3	[Diagram]	400	1010	1.1	
7	Ø6.3	3	[Diagram]	400	1010	1.1		
8	Ø6.3	3	[Diagram]	118	3184		5.0	
					1000+1050	1010	6.7	
					Ø5	0.0	0.7	
					Ø6.3	10.1	0.0	
					Toto	10.1	6.7	



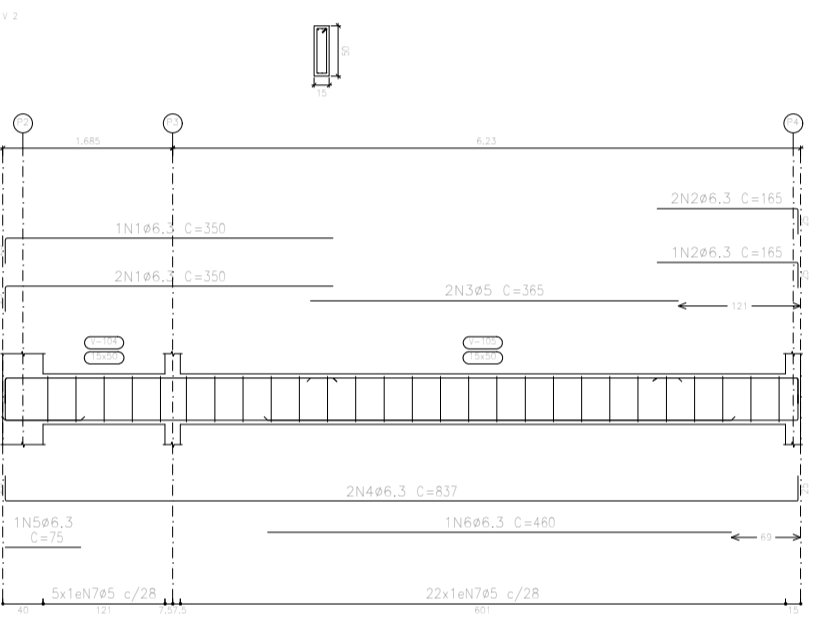
Elemento	Pos.	Diam.	Q.	Esquema (cm)	Comp. (cm)	Toto (cm)	CA-50 (kg)	CA-60 (kg)	
V.11	1	Ø6.3	3	[Diagram]	340	1050	2.5		
	2	Ø6.3	3	[Diagram]	230	1010	0.9		
	3	Ø6.3	3	[Diagram]	180	1010	0.4		
	4	Ø6.3	3	[Diagram]	837	1010	4.1		
	5	Ø6.3	3	[Diagram]	221	1010	0.7		
	6	Ø6.3	3	[Diagram]	331	1010	1.6		
	7	Ø6.3	3	[Diagram]	355	1010	1.8		
	8	Ø6.3	3	[Diagram]	300	1010	0.9		
	9	Ø5	23		[Diagram]	98	3038		4.8
						1000+1050	1010	6.7	
					Ø5	0.0	0.7		
					Ø6.3	13.9	0.0		
					Toto	13.9	6.7		



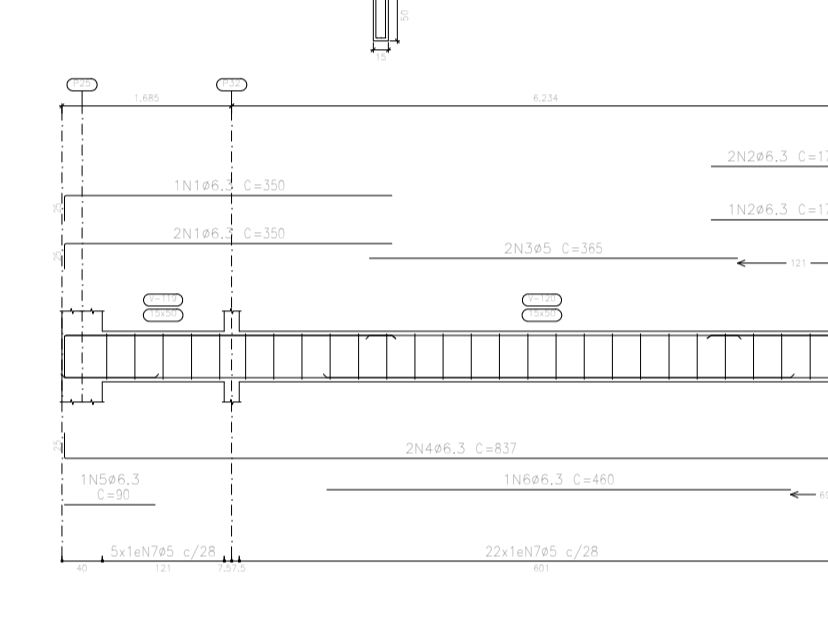
Elemento	Pos.	Diam.	Q.	Esquema (cm)	Comp. (cm)	Toto (cm)	CA-50 (kg)	CA-60 (kg)	
V.7	1	Ø6.3	3	[Diagram]	340	1050	2.5		
	2	Ø6.3	3	[Diagram]	230	1010	0.9		
	3	Ø6.3	3	[Diagram]	180	1010	0.4		
	4	Ø6.3	3	[Diagram]	180	1010	0.4		
	5	Ø6.3	3	[Diagram]	440	1010	2.2		
	6	Ø6.3	3	[Diagram]	837	1010	4.1		
	7	Ø6.3	3	[Diagram]	180	1010	0.4		
	8	Ø6.3	3	[Diagram]	180	1010	0.4		
	9	Ø5	30		[Diagram]	98	2940		4.8
						1000+1050	1010	6.7	
					Ø5	0.0	0.7		
					Ø6.3	12.1	0.0		
					Toto	12.1	6.7		



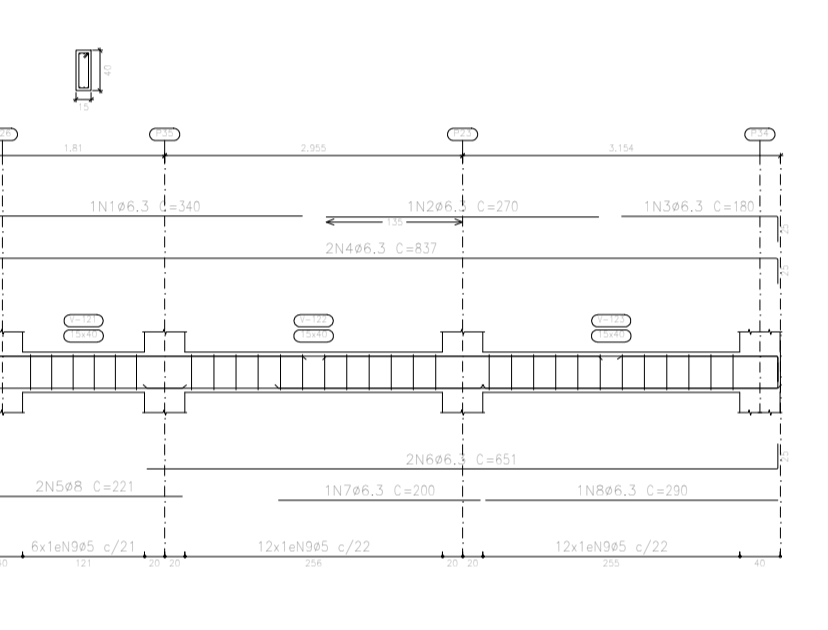
Elemento	Pos.	Diam.	Q.	Esquema (cm)	Comp. (cm)	Toto (cm)	CA-50 (kg)	CA-60 (kg)	
V.8	1	Ø6.3	3	[Diagram]	340	1050	2.5		
	2	Ø6.3	3	[Diagram]	230	1010	0.9		
	3	Ø6.3	3	[Diagram]	180	1010	0.4		
	4	Ø6.3	3	[Diagram]	170	1010	0.6		
	5	Ø6.3	3	[Diagram]	440	1010	2.2		
	6	Ø6.3	3	[Diagram]	837	1010	4.1		
	7	Ø6.3	3	[Diagram]	180	1010	0.4		
	8	Ø6.3	3	[Diagram]	180	1010	0.4		
	9	Ø5	30		[Diagram]	98	2940		4.8
						1000+1050	1010	6.7	
					Ø5	0.0	0.7		
					Ø6.3	12.1	0.0		
					Toto	12.1	6.7		



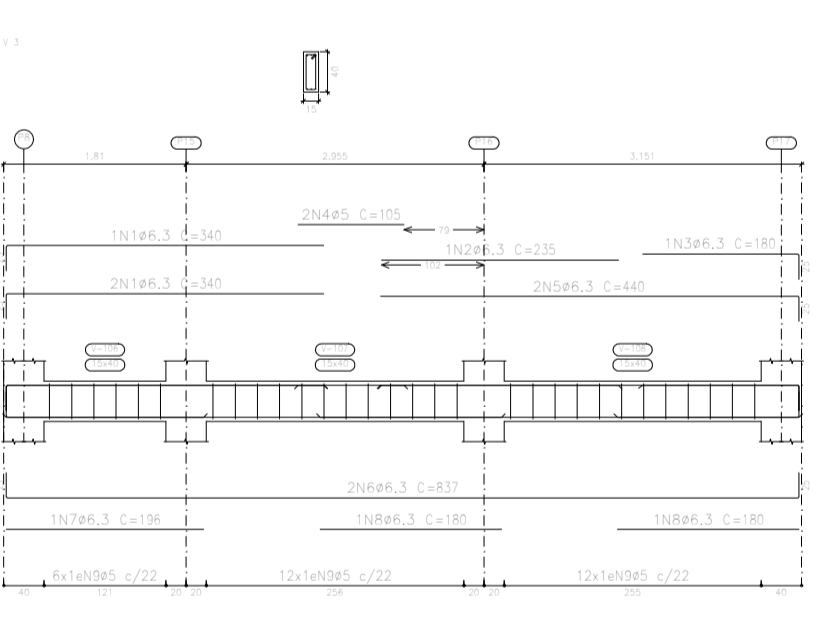
Elemento	Pos.	Diam.	Q.	Esquema (cm)	Comp. (cm)	Toto (cm)	CA-50 (kg)	CA-60 (kg)
V.2	1	Ø6.3	3	[Diagram]	300	1050	2.8	
	2	Ø6.3	3	[Diagram]	170	1010	1.2	
	3	Ø6.3	3	[Diagram]	300	1050	2.8	
	4	Ø6.3	3	[Diagram]	837	1010	4.1	
	5	Ø6.3	3	[Diagram]	400	1010	1.1	
	6	Ø6.3	3	[Diagram]	400	1010	1.1	
	7	Ø5	23		[Diagram]	118	3184	
					1000+1050	1010	6.7	
					Ø5	0.0	0.7	
					Ø6.3	10.1	0.0	
					Toto	10.1	6.7	



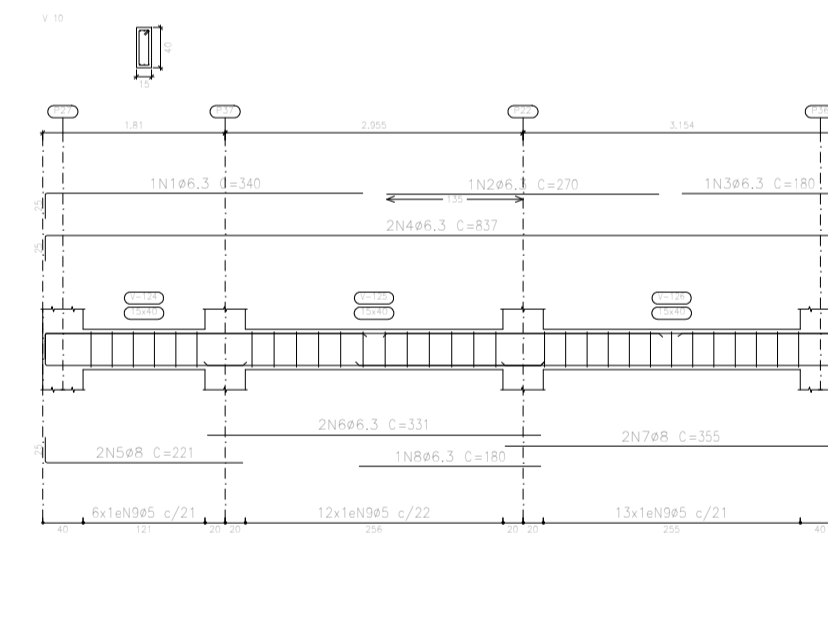
Elemento	Pos.	Diam.	Q.	Esquema (cm)	Comp. (cm)	Toto (cm)	CA-50 (kg)	CA-60 (kg)
V.9	1	Ø6.3	3	[Diagram]	300	1050	2.8	
	2	Ø6.3	3	[Diagram]	170	1010	1.2	
	3	Ø6.3	3	[Diagram]	300	1050	2.8	
	4	Ø6.3	3	[Diagram]	837	1010	4.1	
	5	Ø6.3	3	[Diagram]	400	1010	1.1	
	6	Ø6.3	3	[Diagram]	400	1010	1.1	
	7	Ø5	23		[Diagram]	118	3184	
					1000+1050	1010	6.7	
					Ø5	0.0	0.7	
					Ø6.3	10.1	0.0	
					Toto	10.1	6.7	



Elemento	Pos.	Diam.	Q.	Esquema (cm)	Comp. (cm)	Toto (cm)	CA-50 (kg)	CA-60 (kg)	
V.3	1	Ø6.3	3	[Diagram]	340	1050	2.5		
	2	Ø6.3	3	[Diagram]	230	1010	0.9		
	3	Ø6.3	3	[Diagram]	180	1010	0.4		
	4	Ø6.3	3	[Diagram]	180	1010	0.4		
	5	Ø6.3	3	[Diagram]	440	1010	2.2		
	6	Ø6.3	3	[Diagram]	837	1010	4.1		
	7	Ø6.3	3	[Diagram]	180	1010	0.4		
	8	Ø6.3	3	[Diagram]	180	1010	0.4		
	9	Ø5	30		[Diagram]	98	2940		4.8
						1000+1050	1010	6.7	
					Ø5	0.0	0.7		
					Ø6.3	11.4	0.0		
					Toto	11.4	6.7		



Elemento	Pos.	Diam.	Q.	Esquema (cm)	Comp. (cm)	Toto (cm)	CA-50 (kg)	CA-60 (kg)
V.10	1	Ø6.3	3	[Diagram]	340	1050	2.5	
	2	Ø6.3	3	[Diagram]	230	1010	0.9	
	3	Ø6.3	3	[Diagram]	180	1010	0.4	
	4	Ø6.3	3	[Diagram]	170	1010	0.6	
	5	Ø6.3	3	[Diagram]	440	1010	2.2	
	6	Ø6.3	3	[Diagram]	837	1010	4.1	
	7	Ø6.3	3	[Diagram]	221	1010	0.7	
	8	Ø6.3	3	[Diagram]	331	1010	1.6	
	9	Ø6.3	3	[Diagram]	355	1010	1.8	
	10	Ø5	30		[Diagram]	98	3038	
					1000+1050	1010	6.7	
					Ø5	0.0	0.7	
					Ø6.3	13.9	0.0	
					Toto	13.9	6.7	



Elemento	Pos.	Diam.	Q.	Esquema (cm)	Comp. (cm)	Toto (cm)	CA-50 (kg)	CA-60 (kg)	
V.10	1	Ø6.3	3	[Diagram]	340	1050	2.5		
	2	Ø6.3	3	[Diagram]	230	1010	0.9		
	3	Ø6.3	3	[Diagram]	180	1010	0.4		
	4	Ø6.3	3	[Diagram]	170	1010	0.6		
	5	Ø6.3	3	[Diagram]	440	1010	2.2		
	6	Ø6.3	3	[Diagram]	837	1010	4.1		
	7	Ø6.3	3	[Diagram]	180	1010	0.4		
	8	Ø6.3	3	[Diagram]	180	1010	0.4		
	9	Ø5	30		[Diagram]	98	3038		4.8
						1000+1050	1010	6.7	
					Ø5	0.0	0.7		
					Ø6.3	13.9	0.0		
					Toto	13.9	6.7		

Térreo
 Desenho de vigas
 Casarão: C20, em geral
 Aço das barras: CA-50 e CA-60
 Escala vigas 1:50
 Escala seções 1:50
 Escala aberturas 1:50

Projeto	estruturas	Data	12/02/2022
Local	Mato Grosso		
Nome	Ampliação 4 Salas		
Res.m.	Plano		
	Estrutura		
Auto			
Desenho	Mauro		